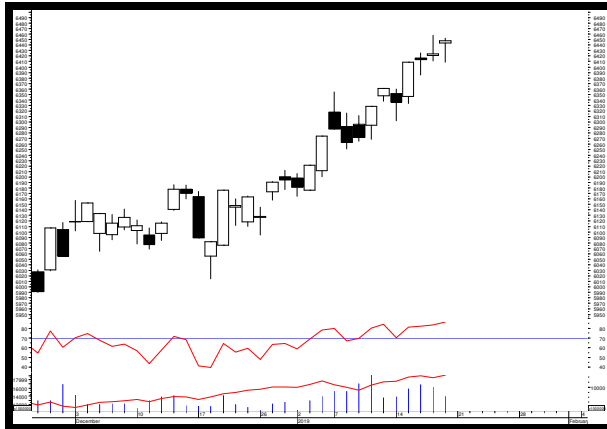


MARKET VIEW

COMPOSITE



Sumber: MetaStock

IHSG berhasil menguat kembali di akhir pekan perdagangan kemarin walaupun hanya sebesar 0.38% atau 24.38 poin di level 6,448.16. Minat beli asing yang besar juga tercatat pada perdagangan kemarin sebesar Rp.928.38 miliar. Dan dari sekitar 584 saham yang kemarin aktif di perdagangan sekitar 223 saham menguat, 216 saham terkoreksi, dan 145 saham tidak mengalami perubahan. Dan pergerakan IHSG diperkirakan masih akan berfluktuatif dikisaran:

Support : 6,401.65  
Resistance : 6,481.87

Close	Point	%Change	52 Weeks Return	Market Caps
6,448.16	24.38	0.38%	0.97%	7,317.88
Active Stock		Trading Volume		Trading Value
Up	Down	Unchange		
223	216	145	11.33	8.96

Sumber: IQPlus

STOCKS ANALYSIS

CIPUTRA DEVELOPMENT (CTRA)



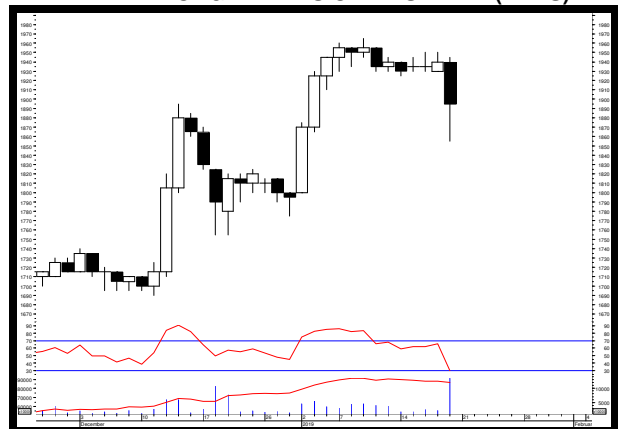
Sumber: MetaStock

Rekomendasi: Buy on Weakness

Resistance	2	:	1025
	1	:	1020
Support	1	:	975
	2	:	965

Trading range saat ini masih dikisaran level 975 – 1100 dan harga mulai memasuki area jenuh jual (*oversold*). Target koreksi terdekat sementara dikisaran level 905 bila harga kembali melemah dan bertahan di bawah 975.

BANK TABUNGAN PENSIUNAN SYARIA (BTPS)



Sumber: MetaStock

Rekomendasi: Buy on Weakness

Resistance	2	:	1950
	1	:	1945
Support	1	:	1855
	2	:	1825

Saat ini harga mulai memasuki area jenuh jual (*oversold*). Selama masih dapat bertahan di atas 1880 masih berpeluang untuk menguji level 1970 – 2020 sebagai target selanjutnya.

**BUYUNG POETRA SEMBADA (HOKI)**



Sumber: MetaStock

**Rekomendasi: Trading Sell**

Resistance	2	:	810
	1	:	790
Support	1	:	725
	2	:	710

Trading range saat ini masih dikisaran level 715 – 795. Target sementara di level 830 bila harga berhasil menguat dan bertahan di atas level 795. Namun bila melemah dan bertahan di bawah 715 membuka peluang untuk menguji level 670.

**UNITED TRACTORS (UNTR)**



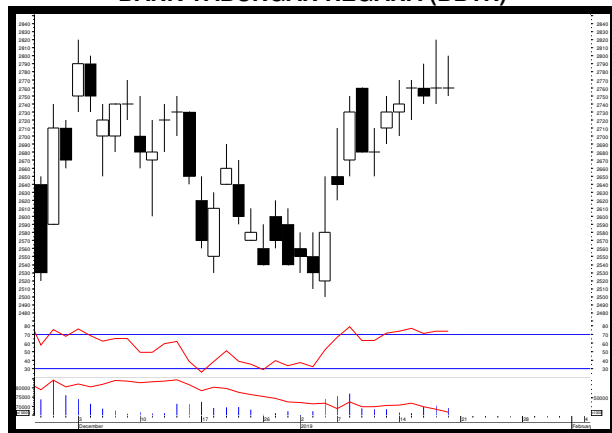
Sumber: MetaStock

**Rekomendasi: Trading Buy**

Resistance	2	:	27825
	1	:	27375
Support	1	:	26650
	2	:	26400

Selama harga masih bertahan di bawah 27150, masih berpeluang untuk menguji level 24150 sebagai target koreksi selanjutnya.

**BANK TABUNGAN NEGARA (BBTN)**



Sumber: MetaStock

**Rekomendasi: Sell on Strength**

Resistance	2	:	2820
	1	:	2800
Support	1	:	2750
	2	:	2740

Trading range saat ini masih dikisaran level 2530 – 2790 dan harga masih berada di area jenuh beli (*overbought*). Target sementara dikisaran level 2950 bila harga berhasil menguat dan bertahan di atas level 2790.

**BUKIT ASAM (PTBA)**



Sumber: MetaStock

**Rekomendasi: Sell on Strength**

Resistance	2	:	4520
	1	:	4510
Support	1	:	4450
	2	:	4410

Trading range saat ini masih dikisaran level 4160 – 4500 dan harga masih berada di area jenuh beli (*overbought*). Target sementara dikisaran level 4710 bila harga berhasil menguat dan bertahan di atas level 4500.

**ASTRA INTERNATIONAL (ASII)**



Sumber: MetaStock

**Rekomendasi: Sell on Strength**

Resistance	2	:	8475
	1	:	8450
Support	1	:	8275
	2	:	8200

Trading range saat ini masih dikisaran level 8100 – 8600. Target sementara dikisaran level 8900 bila harga berhasil menguat dan bertahan di atas level 8600.

**BUMI RESOURCES (BUMI)**



Sumber: MetaStock

**Rekomendasi: Sell on Strength**

Resistance	2	:	180
	1	:	175
Support	1	:	165
	2	:	155

Saat ini harga telah berada di area jenuh beli (*overbought*) tertinggi sepanjang historis sehingga berpotensi melemah sementara. Namun selama masih dapat bertahan di atas level 135 masih berpeluang untuk menguji level 199 – 201 sebagai target selanjutnya.

**LQ45 TRADING GUIDE**

Ticker	Closing	Support	Pivot	Resistance	Trend		Daily Beta	Daily Volatility	
					Daily	Weekly		Last	Average
<b>AGRICULTURE</b>									
<b>Plantation &amp; Others</b>									
SSMS	1,205	1,185	1,205	1,225	Bearish	Bearish	0.56	3.38%	2.72%
<b>MINING</b>									
<b>Coal, Oil &amp; Gas, Metal &amp; Other Resources</b>									
ADRO	1,485	1,475	1,485	1,495	Bullish	Bullish	1.25	1.36%	3.46%
ITMG	23,100	22,550	22,950	23,200	Bullish	Bullish	1.04	2.88%	3.82%
PTBA	4,470	4,450	4,477	4,510	Bullish	Bullish	0.91	1.35%	3.51%
ELSA	366	364	368	374	Bearish	Bearish	1.16	2.75%	3.92%
MEDC	835	825	837	850	Bullish	Bullish	1.07	3.03%	5.08%
ANTM	850	840	853	870	Bullish	Bullish	1.09	3.57%	3.57%
INCO	3,700	3,640	3,703	3,770	Bullish	Bullish	1.22	3.57%	3.72%
<b>BASIC INDUSTRY</b>									
<b>Cement &amp; Others</b>									
INTP	18,800	18,400	18,675	18,825	Bullish	Bullish	1.41	2.31%	3.24%
SMGR	12,700	12,250	12,550	12,700	Bullish	Bullish	1.27	3.67%	2.96%
BRPT	2,370	2,300	2,350	2,380	Bullish	Bearish	0.97	3.48%	3.84%
TPIA	5,450	5,375	5,483	5,625	Bearish	Bearish	0.62	4.65%	2.47%
INKP	12,300	12,200	12,383	12,650	Bearish	Bearish	1.20	3.69%	4.74%
<b>MISC.INDUSTRY</b>									
<b>Otomotif &amp; Manufacturing of Garments</b>									
ASII	8,475	8,275	8,408	8,475	Bullish	Bullish	1.18	2.42%	2.26%
SRIL	342	340	342	344	Bearish	Bearish	0.69	1.18%	3.90%
<b>CONSUMER GOODS</b>									
<b>Foods, Cigarette, Pharmacy &amp; Others</b>									
ICBP	10150	10075	10125	10150	Bullish	Bullish	1.03	0.74%	2.33%
INDF	2,180	7,425	7,492	7,550	Bearish	Bullish	1.16	1.68%	2.29%
UNVR	48,925	48,025	48,625	48,925	Bearish	Bearish	1.08	1.87%	1.93%
HMSP	3,730	3,720	3,763	3,840	Bearish	Bearish	1.28	3.23%	2.72%
GGRM	83,900	83,500	83,917	84,350	Bearish	Bullish	1.14	1.02%	2.36%
KLBF	1,615	1,590	1,610	1,625	Bearish	Bearish	1.17	2.20%	2.58%
<b>PROPERTY &amp; CONSTRUCTIONS</b>									
BKSL	120	120	121	123	Bearish	Bearish	1.24	2.50%	4.66%
BSDE	1,400	1,390	1,407	1,430	Bearish	Bearish	1.30	2.88%	2.83%
LPKR	274	274	278	286	Bearish	Bullish	0.93	4.38%	3.65%
ADHI	1,710	1,690	1,715	1,745	Bearish	Bearish	1.09	3.25%	3.18%
PTPP	2,390	2,280	2,353	2,390	Bearish	Bullish	1.33	4.82%	3.49%
WIKA	1,900	1,875	1,893	1,905	Bearish	Bullish	1.23	1.60%	3.27%
WSBP	394	390	395	400	Bearish	Bullish	1.01	2.56%	3.04%
WSKT	2,070	2,000	2,047	2,070	Bearish	Bullish	1.26	3.50%	3.34%
<b>INFRASTRUCTURE</b>									
<b>Energy, Telecommunication, Transportation &amp; Highway, Non Building Construction</b>									
PGAS	2,430	2,400	2,427	2,450	Bullish	Bullish	1.36	2.08%	3.85%
JSMR	4,900	4,900	4,942	5,025	Bearish	Bearish	1.14	2.55%	2.56%
EXCL	2,290	2,280	2,307	2,350	Bullish	Bullish	1.24	3.07%	4.03%
TLKM	4,020	3,970	4,003	4,020	Bullish	Bullish	1.19	1.26%	2.12%
INDY	2,110	2,110	2,167	2,210	Bullish	Bullish	1.04	4.74%	5.23%
<b>FINANCE</b>									
<b>Bank &amp; Other Financing</b>									
BBCA	27,125	26,575	26,942	27,125	Bullish	Bullish	0.94	2.07%	1.85%
BBNI	9,400	9,200	9,333	9,400	Bullish	Bullish	1.32	2.17%	2.54%
BBRI	3,820	3,790	3,820	3,850	Bullish	Bullish	1.36	1.58%	2.18%
BBTN	2,760	2,750	2,770	2,800	Bullish	Bullish	1.45	1.82%	3.23%
BJBR	2,160	2,120	2,147	2,160	Bullish	Bullish	0.79	1.89%	3.71%
BMRI	7,875	7,825	7,875	7,925	Bullish	Bullish	1.38	1.28%	2.38%
<b>TRADE &amp; SERVICE</b>									
<b>Investment Company &amp; Wholesale</b>									
AKRA	4,750	4,480	4,660	4,750	Bullish	Bullish	1.06	6.03%	3.01%
UNTR	26,925	26,650	26,983	27,375	Bullish	Bullish	1.27	2.72%	3.07%
LPPF	6,000	5,725	5,950	6,125	Bearish	Bearish	1.22	6.99%	4.08%
MNCN	860	850	860	870	Bullish	Bullish	1.07	2.35%	3.75%
SCMA	1,945	1,935	1,955	1,985	Bearish	Bullish	1.16	2.58%	3.59%

Sumber: Lautandhana Securindo

**Note:**

1. Bila harga OPEN pada perdagangan hari ini lebih besar (kecil) daripada nilai PIVOT, maka terdapat kemungkinan saham tersebut akan berpotensi menguat (melemah) pada perdagangan hari ini.
2. Beta diatas 1 ( $\beta > 1$ ) mengindikasikan adanya kemungkinan saham tersebut bergerak melebihi pergerakan pasar. (jika kondisi pasar (IHSG) dalam keadaan *bullish (bearish)* maka saham tersebut kemungkinan akan naik (turun) melebihi kenaikan (penurunan) pasar)
3. Bila trend daily dan weekly menunjukkan *bullish (bearish)*, maka besar kemungkinan saham tersebut akan menguat (melemah)
4. *Daily Volatility* merupakan historis dari keuntungan maksimum maupun kerugian maksimum yang dapat diterima investor dalam 1 hari perdagangan. (**Last:** historis volatilitas pada perdagangan kemarin, **Average:** rata-rata volatilitas per hari selama 1 tahun perdagangan)



Gedung The City Tower 7<sup>th</sup> floor  
 Jl. MH Thamrin No.81  
 Jakarta Pusat 10310  
 T +62 21 2395 1000  
 F +62 21 2395 1099

**EQUITY DIVISION**

**Jakarta Branch**

**Pluit**

Kawasan CBD Pluit Blok A No.20  
 Jl. Pluit Selatan Raya No.1  
 Jakarta Utara 14440  
 T +6221 6667 5345  
 F +6221 6667 5234

**Kelapa Gading**

Sentra Bisnis Artha Gading  
 Jl. Boulevard Artha Gading Blok A6B Kav.7  
 Kelapa Gading Barat  
 Jakarta Utara 14240  
 T +6221 4585 6402  
 F +6221 4587 3961

**Puri**

Rukan Grand Taman Aries Niaga Blok G1 No.11  
 Jl. Taman Aries Kembangan  
 Jakarta Barat 11620  
 T +6221 2931 9515  
 F +6221 2931 9516

**Others Branch**

**Bandung**

Komplek Paskal Hypersquare  
 Blok C No. 15, Kebon Jeruk  
 Bandung 40181  
 T +6222 8606 1027  
 F +6222 8606 0684

**Medan**

Jl. Kartini No.5  
 Medan 20152  
 T +6261 451 8855  
 F +6261 455 1836

**Surabaya Branch**

Ruko Permata Bintoro  
 Jl. Ketampon Kav.1-2  
 Surabaya  
 T +6231 562 2555  
 F +6231 567 1398

**DISCLAIMER**

This report has been prepared by PT. Lotus Andalan Sekuritas on behalf of itself and its affiliated companies and is provided for information purposes only. Under no circumstances is it to be used or considered as an offer to sell, or a solicitation of any offer to buy. This report has been produced independently and the forecasts, opinions and expectations contained herein are entirely those of PT. Lotus Andalan Sekuritas.

While all reasonable care has been taken to ensure that information contained herein is not untrue or misleading at the time of publication, PT. Lotus Andalan Sekuritas makes no representation as to its accuracy or completeness and it should not be relied upon as such. This report is provided solely for the information of clients of PT. Lotus Andalan Sekuritas who are expected to make their own investment decisions without reliance on this report. Neither PT. Lotus Andalan Sekuritas nor any officer or employee of PT. Lotus Andalan Sekuritas accept any liability whatsoever for any direct or consequential loss arising from any use of this report or its contents. PT. Lotus Andalan Sekuritas and/or person connected with it may have acted upon or used the information herein contained, or the research or analysis on which it is based, before publication.