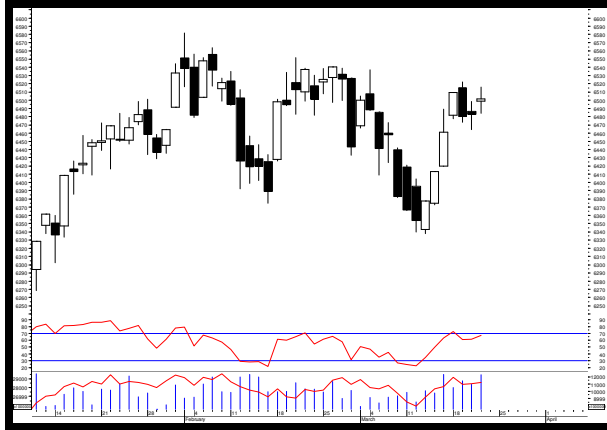


MARKET VIEW

COMPOSITE



Sumber: MetaStock

IHSG berhasil menguat kembali di perdagangan kemarin sebesar 0.29% atau 19.07 poin di level 6,501.78. Namun minat jual asing tercatat mewarnai pergerakan IHSG di perdagangan kemarin sebesar Rp.89.81 miliar. Dan dari sekitar 559 saham yang kemarin aktif di perdagangan sekitar 206 saham menguat, 213 saham terkoreksi, dan 140 saham tidak mengalami perubahan. IHSG diperkirakan masih akan berfluktuatif dikisaran:

Support : 6,434.91
Resistance : 6,525.72

Close	Point	%Change	52 Weeks Return	Market Caps
6,501.78	19.07	0.29%	1.39%	7,393.66
Active Stock		Trading Volume		Trading Value
Up	Down	Unchange		
206	213	140	15.07	8.74

Sumber: IQPlus

STOCKS ANALYSIS

ERAJAYA SWASEMBADA (ERAA)



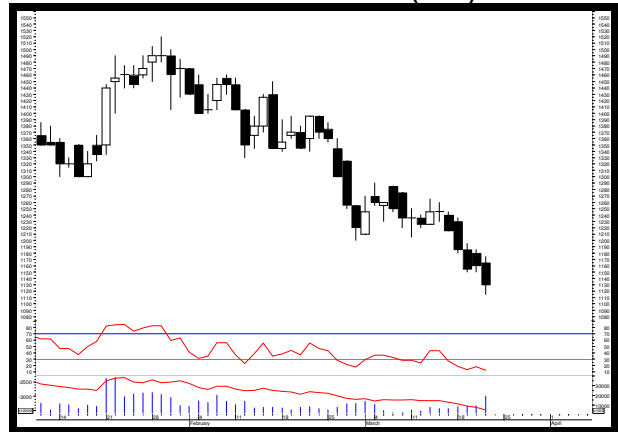
Sumber: MetaStock

Rekomendasi: Trading Buy

Resistance	2	:	2050
	1	:	2010
Support	1	:	1975
	2	:	1960

Trading range saat ini masih dikisaran level 1950 – 2210 dan target koreksi sementara dikisaran level 1790 bila harga melemah dan bertahan di bawah 1950.

PP LONDON SUMATRA (LSIP)



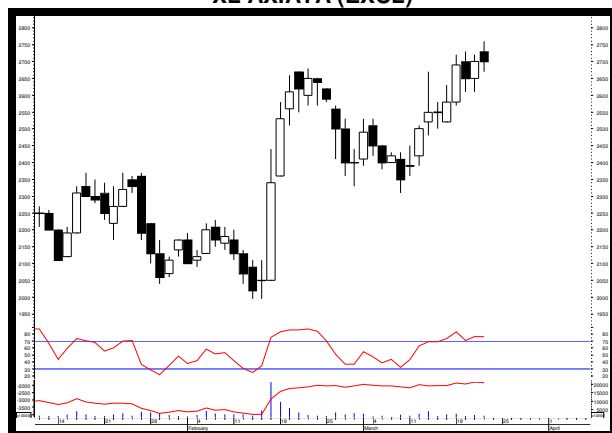
Sumber: MetaStock

Rekomendasi: Buy on Weakness

Resistance	2	:	1185
	1	:	1175
Support	1	:	1115
	2	:	1105

Harga masih terus berada di area jenuh jual (*oversold*) namun belum terendah sepanjang historis. Kekuatan jual juga masih terus mendominasi dalam lima hari perdagangan terakhir. Support kuat sementara dikisaran level 1025.

XL AXIATA (EXCL)



Sumber: MetaStock

Rekomendasi: Trading Buy

Resistance	2	:	2800
	1	:	2760
Support	1	:	2670
	2	:	2610

Saat ini harga telah berada di area jenuh beli (*overbought*) namun selama masih dapat bertahan di atas level 2650 masih terbuka peluang untuk menguji level 2830 – 2980 sebagai target sementara.

SURYA CITRA MEDIA (SCMA)



Sumber: MetaStock

Rekomendasi: Trading Buy

Resistance	2	:	1800
	1	:	1790
Support	1	:	1740
	2	:	1725

Trading range saat ini masih dikisaran level 1730 – 1850. Target koreksi sementara dikisaran level 1655 bila harga melemah dan bertahan di bawah level 1730. Namun bila harga berhasil menguat dan bertahan di atas level 1850 membuka peluang untuk menguji level 1925.

DELTA DUNIA MAKMUR (DOID)



Sumber: MetaStock

Rekomendasi: Trading Buy

Resistance	2	:	605
	1	:	595
Support	1	:	580
	2	:	575

Trading range saat ini dikisaran level 560 – 595 dengan target koreksi sementara dikisaran level 540.

MEDIA NUSANTARA CITRA (MNCN)



Sumber: MetaStock

Rekomendasi: Buy on Weakness

Resistance	2	:	850
	1	:	835
Support	1	:	765
	2	:	750

Saat ini harga telah berada di area jenuh jual (*oversold*), namun selama masih bertahan di bawah level 820 masih terbuka peluang untuk menguji level 760 – 720 – 710 – 695 sebagai target koreksi sementara.

PERUSAHAAN GAS NEGARA (PGAS)



Sumber: MetaStock

Rekomendasi: Trading Buy

Resistance	2	:	2490
	1	:	2440
Support	1	:	2350
	2	:	2340

Trading range saat ini dikisaran level 2340 – 2650 dengan target koreksi sementara dikisaran level 2150 bila harga terus melemah dan bertahan di bawah 2340.

WIJAYA KARYA (WIKA)



Sumber: MetaStock

Rekomendasi: Trading Buy

Resistance	2	:	2030
	1	:	2020
Support	1	:	1995
	2	:	1985

Saat ini harga masih berada di area jenuh beli (*overbought*) dan membentuk pola *bearish harami* sehingga berpotensi melemah di perdagangan hari ini. Namun selama masih dapat bertahan di atas level 1940 masih berpeluang untuk menguji level 2120 sebagai target sementara.

LQ45 TRADING GUIDE

Ticker	Closing	Support	Pivot	Resistance	Trend		Daily Beta	Daily Volatility	
					Daily	Weekly		Last	Average
MINING									
Coal, Oil & Gas, Metal & Other Resources									
ADRO	1,425	1,410	1,428	1,450	Bearish	Bearish	1.24	2.84%	3.48%
INDY	2,020	2,010	2,037	2,080	Bearish	Bearish	1.02	3.48%	5.21%
ITMG	23,375	22,925	23,233	23,400	Bullish	Bullish	1.03	2.07%	3.75%
PTBA	4,040	4,020	4,040	4,060	Bullish	Bullish	0.91	1.00%	3.41%
ELSA	368	366	369	374	Bullish	Bearish	1.14	2.19%	3.86%
MEDC	905	900	912	930	Bullish	Bullish	1.08	3.33%	5.01%
ANTM	965	960	968	980	Bullish	Bullish	1.12	2.08%	3.64%
INCO	3,590	3,540	3,593	3,650	Bullish	Bullish	1.25	3.11%	3.69%
BASIC INDUSTRY									
Cement, Chemistry, & Others									
INTP	20,850	19,650	20,525	21,075	Bullish	Bullish	1.41	7.25%	3.25%
SMGR	13,700	13,250	13,575	13,775	Bullish	Bullish	1.29	3.96%	2.97%
WSBP	396	392	397	402	Bearish	Bullish	1.01	2.55%	3.01%
BRPT	3,450	3,300	3,403	3,460	Bullish	Bullish	0.97	4.85%	3.82%
TPIA	5,625	5,600	5,633	5,675	Bearish	Bearish	0.63	1.34%	2.50%
CPIN	7,850	7,575	7,758	7,850	Bullish	Bullish	1.20	3.63%	3.65%
INKP	10,200	10,075	10,225	10,400	Bullish	Bullish	1.22	3.23%	4.71%
TKIM	11,875	11,800	11,867	11,925	Bullish	Bullish	1.17	1.06%	5.26%
MISC.INDUSTRY									
Otomotif & Manufacturing of Garments									
ASII	7,250	7,225	7,267	7,325	Bearish	Bearish	1.20	1.38%	2.26%
SRIL	340	338	340	342	Bullish	Bullish	0.67	1.18%	3.77%
CONSUMER GOODS									
Foods, Cigarette, Pharmacy & Others									
ICBP	10375	10275	10367	10450	Bearish	Bullish	1.02	1.70%	2.29%
INDF	7,300	7,175	7,275	7,350	Bullish	Bullish	1.17	2.44%	2.29%
GGRM	88,000	87,300	88,517	90,250	Bearish	Bearish	1.15	3.38%	2.37%
HMSP	3,760	3,740	3,760	3,780	Bearish	Bearish	1.27	1.07%	2.66%
KLBF	1,510	1,500	1,517	1,540	Bearish	Bearish	1.15	2.67%	2.52%
UNVR	49,225	48,850	49,258	49,700	Bearish	Bearish	1.09	1.74%	1.90%
PROPERTY & CONSTRUCTIONS									
BSDE	1,445	1,420	1,440	1,455	Bullish	Bullish	1.29	2.46%	2.87%
PWON	705	680	698	710	Bullish	Bullish	1.31	4.41%	3.54%
ADHI	1,615	1,605	1,617	1,630	Bullish	Bullish	1.09	1.56%	3.14%
PTPP	2,110	2,100	2,117	2,140	Bullish	Bullish	1.35	1.90%	3.52%
WIKA	2,000	1,995	2,005	2,020	Bullish	Bullish	1.25	1.25%	3.26%
WSKT	1,940	1,930	1,943	1,960	Bullish	Bullish	1.27	1.55%	3.33%
INFRASTRUCTURE									
Energy, Telecommunication, Transportation & Highway, Non Building Construction									
PGAS	2,380	2,350	2,390	2,440	Bearish	Bearish	1.36	3.83%	3.82%
EXCL	2,700	2,670	2,710	2,760	Bullish	Bullish	1.26	3.37%	4.10%
TLKM	3,800	3,770	3,793	3,810	Bearish	Bullish	1.14	1.06%	2.10%
JSMR	5,450	5,300	5,400	5,450	Bullish	Bullish	1.14	2.83%	2.58%
FINANCE									
Bank									
BBCA	27,450	27,300	27,450	27,600	Bearish	Bearish	0.95	1.10%	1.83%
BBNI	9,500	9,425	9,492	9,550	Bullish	Bullish	1.32	1.33%	2.50%
BBRI	3,980	3,970	3,997	4,040	Bearish	Bullish	1.36	1.76%	2.15%
BBTN	2,520	2,410	2,487	2,530	Bullish	Bullish	1.45	4.98%	3.20%
BMRI	7,500	7,450	7,492	7,525	Bullish	Bullish	1.39	1.01%	2.39%
TRADE & SERVICE									
Wholesale, Media, & Investment Company									
AKRA	4,690	4,670	4,713	4,780	Bearish	Bearish	1.05	2.36%	3.12%
UNTR	27,800	27,275	27,650	27,875	Bullish	Bullish	1.26	2.20%	3.04%
ERAA	2,000	1,975	1,995	2,010	Bearish	Bearish	1.13	1.77%	5.09%
LPPF	4,150	4,010	4,110	4,170	Bullish	Bullish	1.22	3.99%	4.29%
MNCN	795	765	798	835	Bearish	Bearish	1.10	9.15%	3.82%
SCMA	1,790	1,740	1,773	1,790	Bullish	Bullish	1.14	2.87%	3.53%

Sumber: Lautandhana Securindo

Note:

1. Bila harga OPEN pada perdagangan hari ini lebih besar (kecil) daripada nilai PIVOT, maka terdapat kemungkinan saham tersebut akan berpotensi menguat (melemah) pada perdagangan hari ini.
2. Beta diatas 1 (b>1) mengindikasikan adanya kemungkinan saham tersebut bergerak melebihi pergerakan pasar.
(jika kondisi pasar (IHSG) dalam keadaan *bullish* (*bearish*) maka saham tersebut kemungkinan akan naik (turun) melebihi kenaikan (penurunan) pasar)
3. Bila trend daily dan weekly menunjukkan bullish (bearish), maka besar kemungkinan saham tersebut akan menguat (melemah)
4. *Daily Volatility* merupakan historis maksimum maupun kerugian maksimum yang dapat diterima investor dalam 1 hari perdagangan.
(**Last:** historis volatilitas pada perdagangan kemarin, **Average:** rata-rata volatilitas per hari selama 1 tahun perdagangan)



Gedung The City Tower 7th floor
Jl. MH Thamrin No.81
Jakarta Pusat 10310
T +62 21 2395 1000
F +62 21 2395 1099

EQUITY DIVISION

Jakarta Branch

Pluit

Kawasan CBD Pluit Blok A No.20
Jl. Pluit Selatan Raya No.1
Jakarta Utara 14440
T +6221 6667 5345
F +6221 6667 5234

Kelapa Gading

Sentra Bisnis Artha Gading
Jl. Boulevard Artha Gading Blok A6B Kav.7
Kelapa Gading Barat
Jakarta Utara 14240
T +6221 4585 6402
F +6221 4587 3961

Puri

Rukan Grand Taman Aries Niaga Blok G1 No.11
Jl. Taman Aries Kembangan
Jakarta Barat 11620
T +6221 2931 9515
F +6221 2931 9516

Others Branch

Bandung

Komplek Paskal Hypersquare
Blok C No. 15, Kebon Jeruk
Bandung 40181
T +6222 8606 1027
F +6222 8606 0684

Medan

Jl. Kartini No.5
Medan 20152
T +6261 451 8855
F +6261 455 1836

Surabaya Branch

Ruko Permata Bintoro
Jl. Ketampon Kav.1-2
Surabaya
T +6231 562 2555
F +6231 567 1398

DISCLAIMER

This report has been prepared by PT. Lotus Andalan Sekuritas on behalf of itself and its affiliated companies and is provided for information purposes only. Under no circumstances is it to be used or considered as an offer to sell, or a solicitation of any offer to buy. This report has been produced independently and the forecasts, opinions and expectations contained herein are entirely those of PT. Lotus Andalan Sekuritas.

While all reasonable care has been taken to ensure that information contained herein is not untrue or misleading at the time of publication, PT. Lotus Andalan Sekuritas makes no representation as to its accuracy or completeness and it should not be relied upon as such. This report is provided solely for the information of clients of PT. Lotus Andalan Sekuritas who are expected to make their own investment decisions without reliance on this report. Neither PT. Lotus Andalan Sekuritas nor any officer or employee of PT. Lotus Andalan Sekuritas accept any liability whatsoever for any direct or consequential loss arising from any use of this report or its contents. PT. Lotus Andalan Sekuritas and/or person connected with it may have acted upon or used the information herein contained, or the research or analysis on which it is based, before publication.